



Creating and Sustaining a Rich Water Environment Local Innovation with a Global Reach





株式会社 北九州ウォーターサービス
Kitakyushu Water Service Co., Ltd.

4F AIM Building, 3-8-1 Asano,
Kokurakita-ku, Kitakyushu City
802-0001 Japan

Tel +81-93-533-4343 Fax +81-93-533-5354

<http://www.kitakyuws.co.jp>

Corporate Philosophy

Kitakyushu Water Service has emerged as a new leader supporting the development of waterworks and sewerage in the City of Kitakyushu, Japan and abroad to create a diverse and rich water environment.

Water is a lifeline that holds the keys to sustaining life. Together with Water and Sewer Bureau, City of Kitakyushu and local private companies, Kitakyushu Water Service is engaged in building up and passing on its maintenance, management and technological prowess in waterworks and sewerage to provide safe and secure water for all.

Kitakyushu Water Service is a new type of public consortium established with joint investment from Water and Sewer Bureau, City of Kitakyushu and the private sector. KWS is committed to developing business ventures in regional areas and overseas—a need in today’s world—in addition to local business activities in Kitakyushu itself using our extensive technological capabilities, creativity, speed and flexibility.

Trust—the top priority for waterworks and sewerage—is an essential component in protecting life. With a strong reputation in Japan, KWS has partnered with Kitakyushu City and acts as the glue to seamlessly connect and support neighboring areas as they face a wide-range of problems, including a lack of human resources and aging facilities, as well as companies aiming to advance into wide-area and overseas markets. We hope to grow together with local communities and help them lead rich and productive lives through waterworks and sewerage.



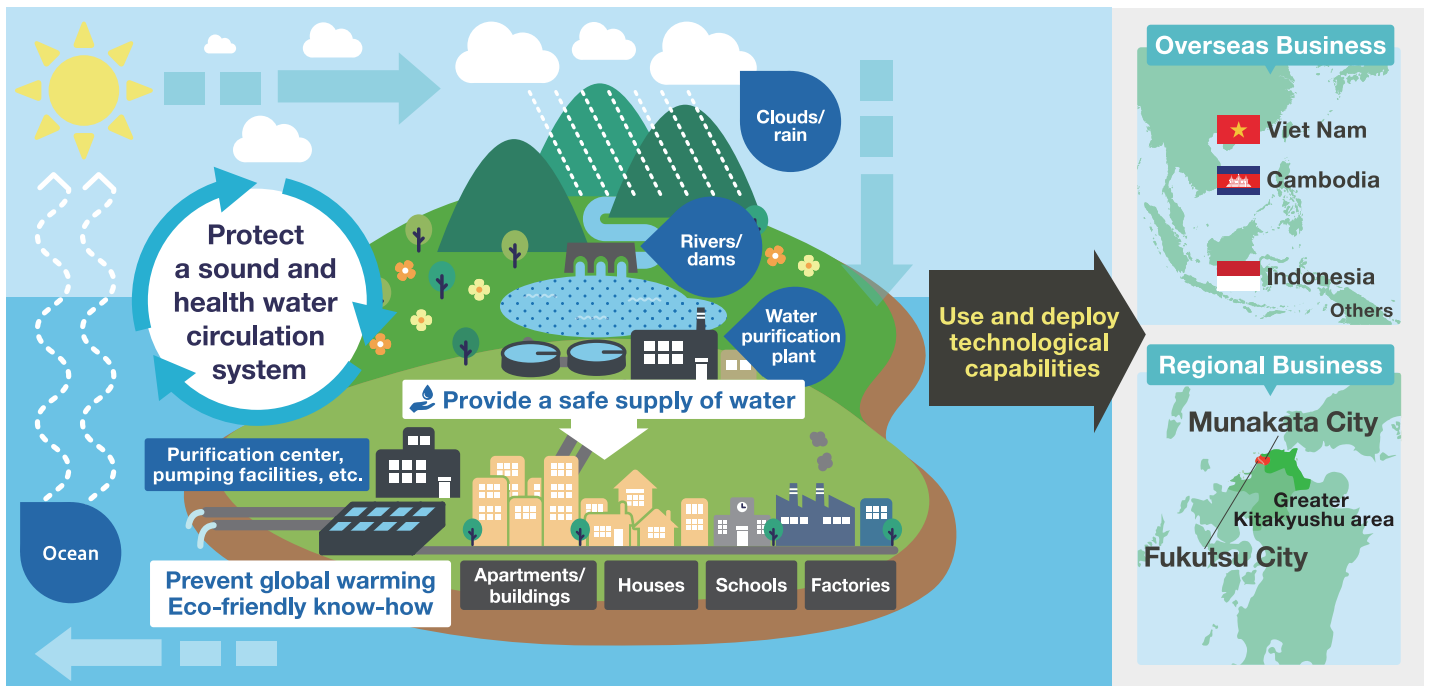
President & CEO
Arita Hitoshi

Business scope of Kitakyushu Water Service



Business Planning

- KWS supports the sustainability and development of waterworks and sewerage in three areas:
- 1) Local business activities to support waterworks and sewerage in Kitakyushu City,
 - 2) Regional business initiatives to support waterworks and sewerage in neighboring municipalities,
 - 3) Overseas business ventures to support Kitakyushu City and private companies in their aspirations to expand their water business overseas.

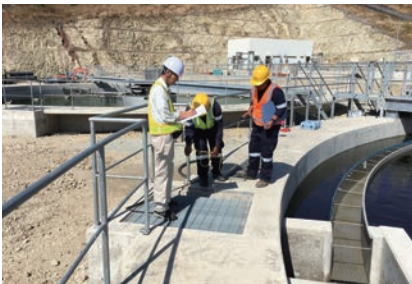


Local Business



KWS operates purification plants and purification centers of Kitakyushu City (Water and Sewer Bureau) to maintain waterworks and sewerage lifelines. KWS also strives to improve technologies for waterworks and sewerage, looking ahead to a period of maintenance and management by engaging in the development of human resources and transferring technology.

Overseas Business



Established as a semi-public corporation (known as the “third sector” in Japan), KWS serves as the secretariat for the Kitakyushu Overseas Water Business Association (KOWBA) and is currently actively involved in water business ventures overseas that are deeply rooted in past technical cooperation projects carried out by the Water and Sewer Bureau, City of Kitakyushu.

KWS contributes to the sustainability of the water environment from a variety of angles, including the stable operation of waterworks and sewerage, ensuring sustainability, developing, operating, maintaining and managing infrastructure, providing technical guidance and training human resources.

Regional Business



By taking advantage of the deep well of technological competency built up in Kitakyushu City and the flexibility and speed of a corporation, KWS supports the operation of water and sewage utilities located in the Greater Kitakyushu area. KWS is also devising techniques to standardize and generalize business operations, providing flexible solutions for various needs in order to transform itself into a platform capable of passing on the technology that forms the very essence of all that KWS strives to achieve.

Corporate Profile

Name	Kitakyushu Water Service Co., Ltd.														
Est.	December 2015														
Representative	Arita Hitoshi, President & CEO														
Capital	JPY 100 million														
Activities	<ol style="list-style-type: none"> 1.Operation and maintenance of water supply and sewage facilities and other related facilities 2.Supervision, examination and inspection of the construction of water supply and sewage facilities and related facilities, equipment, machinery and materials 3.Surveys and analysis of water supply and sewage water quality 4.Research, analysis and consulting service of water supply and sewage 5.International technical cooperation projects and overseas water business 6.Management and operation of real estate 7.Any and all other business incidental or related to any of the preceding items 														
Shareholders	<p style="text-align: right;">(Investment ratio)</p> <table border="0" style="width: 100%;"> <tr> <td>City of Kitakyushu</td> <td style="text-align: right;">54%</td> </tr> <tr> <td>YASKAWA AUTOMATION&DRIVES CORP.</td> <td style="text-align: right;">19%</td> </tr> <tr> <td>METAWATER Co., Ltd.</td> <td style="text-align: right;">19%</td> </tr> <tr> <td>Mizuho Bank, Ltd.</td> <td style="text-align: right;">2%</td> </tr> <tr> <td>THE BANK OF FUKUOKA, LTD.</td> <td style="text-align: right;">2%</td> </tr> <tr> <td>THE NISHI-NIPPON CITY BANK, LTD.</td> <td style="text-align: right;">2%</td> </tr> <tr> <td>THE KITAKYUSHU BANK, Ltd.</td> <td style="text-align: right;">2%</td> </tr> </table>	City of Kitakyushu	54%	YASKAWA AUTOMATION&DRIVES CORP.	19%	METAWATER Co., Ltd.	19%	Mizuho Bank, Ltd.	2%	THE BANK OF FUKUOKA, LTD.	2%	THE NISHI-NIPPON CITY BANK, LTD.	2%	THE KITAKYUSHU BANK, Ltd.	2%
City of Kitakyushu	54%														
YASKAWA AUTOMATION&DRIVES CORP.	19%														
METAWATER Co., Ltd.	19%														
Mizuho Bank, Ltd.	2%														
THE BANK OF FUKUOKA, LTD.	2%														
THE NISHI-NIPPON CITY BANK, LTD.	2%														
THE KITAKYUSHU BANK, Ltd.	2%														
Officers	<p>Arita Hitoshi, President & CEO</p> <p>Matsuo Akimasa, Director</p> <p>Konishi Junsuke, Director</p> <p>Mochiyama Yasuo, Director</p> <p>Osako Michihiro, Auditor</p> <p>Uchida Akihisa, Auditor</p>														
Location	4F AIM Building, 3-8-1 Asano, Kokurakita-ku, Kitakyushu City 802-0001 Japan														

Organizational Chart

